



Into the Northwest Passage

August 16 to September 1, 2025

A ROMTravel Art, Culture and Nature Trip

The “Ocean Endeavour”

Your Adventure Canada Experience

Immerse yourself in the wonders of nature and culture. Travel alongside scientists, historians, naturalists, cultural ambassadors, and artists, who share their passion and experience with you.



Figure 1: Conversation with expedition host and photographer Danny Catt. © Adventure Canada, 2007.

Adventure Canada’s expeditions are more than phenomenal expeditions of a lifetime. They are lifelong learning journeys for the heart and mind. Your expedition is an immersive cultural experience both on and off the ship.

Our shipboard program is educational and fun. You can join daily presentations, debates, and workshops that provide perspective and understanding. Our expedition staff, experts in their fields, are approachable, available on deck and at meals, and always on shore during excursions. Our unique mix of entertainment and camaraderie is integral to our evening concerts, daily gatherings, and learning opportunities.

Each day, your onboard and onshore programming is thoughtfully planned to make the most of the local environment. Hiking, wildlife viewing, historic sites, community visits, and Zodiac cruising are regular activities. You can spot wildlife from the deck, take a polar plunge, relax in the hot tub, take care of yourself at a stretch class, or unwind with a great book from our onboard library. You choose the activities that are best suited to your abilities and interests.

Learn from the Locals

Adventure Canada has a myriad of connections in the regions we visit. Nothing beats being welcomed as an honoured guest. Esteemed local guides connect you to our destinations, their people, and culture. Personally!

Safety First, Experience Foremost

You are in good hands. Our expedition staff are experienced, attentive and knowledgeable. They will ensure your comfort and safety, then enlighten, inspire, and entertain you!

Our expedition team is at the heart of our programming, and there is something for everyone! Join our staff in presentations, workshops, discussion panels, Question and Answer sessions, and more.

Enriching Expeditions in Spectacular Locations

Your Personal Voyage of Discovery

Explore and learn about new lands and people as you experience the rich culture and fascinating landscapes to which we sail. Take the road less travelled and enrich your perspective during visits to communities, natural habitats, and historic sites that can be otherwise difficult to reach.

Our expeditions are designed to be flexible and allow us to make the best of Mother Nature's conditions. We often make landfall at new places and are able to share new discoveries and local

knowledge with you. Your voyage will be marked with thoughtful discussions, expert interpretation, and the spirit of discovery.

Get off the ship, get into a Zodiac!

Cruise among icebergs. Search for marine mammals. Visit an outpost community. Wander remote coastlines. Simply enjoy the freedom of being out on the water daily! Our goal is to get you off the ship, as often as possible.



Figure 2: A Zodiac expedition. © Daniel J. Catt, 2007.

Zodiacs free us from the dependency on ports, piers, and other man-made infrastructure. These safe, stable, versatile boats take you where the action is.

Learn from Passionate Experts

Why would an esteemed Canada Research Chair, for example, travel with us on a working vacation? It's simple. They can't resist the opportunity to engage, excite, educate, and enlighten you! Make the most of every learning opportunity, aboard and ashore, in geology, botany, marine biology,

archeology, photography, cultural history, and more!

Our handpicked experts are as excited as you are to be on board. Join them on deck searching for wildlife, share daily meals for personal in-depth conversations, participate in workshops, attend presentations, and learn on the land. The Adventure Canada team has a deep love for discovery, learning, exploration, and growth, and is at your service.

Experience Local Culture and Traditions

From Arctic communities to the fishing villages of old New France, to the outports of Newfoundland and Labrador, we embrace local music, dance, food, language, and traditions, everywhere we go!

Expedition travel is not just about what you see, or where you go. It's who you meet and get to know.

Wildlife Encounters

Daily excursions with expert guides put you where you are most likely to see wildlife such as whales and seabirds in Atlantic Canada, and muskox, seals, and polar bears in the High Arctic. Whether viewing on deck, in the Zodiac, or learning during our presentation series, you will come away with an appreciation for the fine creatures that inhabit our world. Our best practices ensure the safety and integrity of the wildlife we have the privilege to view.

Specials and Incentives

Limited-Time Offer

For ROMTravel adventurers, save 25% on the cabin cost if you book by September 19, 2024. Mention promo code ROM2025 if you call Adventure Canada or use Adventure Canada's Get a Quote option on their website to type in the promo code. Booking must be confirmed with a signed registration agreement and deposit.

League of Adventurers Loyalty Rewards Program

Exploring with Adventure Canada just got better with our exclusive loyalty program: The League of Adventurers. The number of people who keep travelling with us continues to grow and, in response, we want to thank our returning clients by offering special rewards and benefits. As a past traveller you are automatically a valued member of the League and eligible for special rewards.

Save 5% when booking your second to fifth shipboard expedition operated by Adventure Canada.

Save 10% when booking your sixth or more shipboard expedition operated by Adventure Canada.

Plus: League of Adventurers welcome package; newsletter, and early notifications of upcoming promotions and events.

Terms and conditions apply.

Free Single Supplement

For those who prefer not to share, we have a limited quantity of cabins in category 3 through to category 7 with no single supplement! Once these cabins are sold, the single supplement fee is 1.5 times the cabin cost. Single occupancy in categories 8–10 is available at full double-occupancy rates. Can be combined with the Multi-Trip Promotion, League of Adventurers Loyalty Rewards Program, and Early Booking Bonus. Subject to cabin availability.



Figure 3: Arctic hares, Greenland. © Dennis Minty, 2011.

Multi-Trip Promotion

Receive 30% off the cabin cost when you book more than one Ocean Endeavour expedition (excluding Antarctica) in the same calendar year. Can be combined with the Free Single Supplement and League of Adventurers Loyalty Rewards Program.

Family-Friendly

Children four years old and younger pay only for charter airfare, and children two years and younger travel free! Children must be accompanied by a full-fare adult. Can be combined with the League of Adventurers Loyalty Rewards Program.

Save 30% under 30

Save 30% on the cabin cost for travellers under thirty years of age. Can be combined with the Free Single Supplement and League of Adventurers Loyalty Rewards Program.



Figure 4: Girls in traditional Greenlandic clothing. © Michelle Valberg, 2011.

Ship Overview



Figure 5: “Ocean Endeavour”. © Michelle Valberg, 2020.

Capacity 198 passengers

Length 137 metres (450 feet)

Registry Portugal

The “Ocean Endeavour” is the perfect vessel for expedition cruising. Outfitted with twenty Zodiacs, advanced navigation equipment, multiple lounges, and a top deck observation room, she is purpose built for passenger experiences in remote environments. The “Ocean Endeavour” boasts a 1B ice class, enabling her to explore throughout the Arctic summer. Launched in 1982, she has had numerous upgrades, most recently in 2016.

At 137 metres (450 feet) in length, the “Ocean Endeavour” has plenty of interior and exterior space. Ample deck space offers comfortable lounge chairs, a swimming pool, two saunas, and a hot tub. The spacious interior allows for varied workshops and presentations to occur simultaneously. The three lounges aboard the “Ocean Endeavour” are optimal locations for seminars, events, parties, and conversation.

Cabins

Cabin Category 10 Suite

Deck seven: forward-facing picture windows, unobstructed view, matrimonial bed, private bath with full tub, refrigerator. Approximately 95 square metres (310 square feet).



Figure 6: Cabin Category 10 Suite.

Cabin Category 9 Junior Suite

Deck five: picture windows, unobstructed view, matrimonial bed, sitting area. Approximately 82 square metres (270 square feet).

Deck seven forward: forward-facing picture windows, unobstructed view, matrimonial bed, sitting area, private bath with full tub, refrigerator. Approximately 88 square metres (290 square feet).

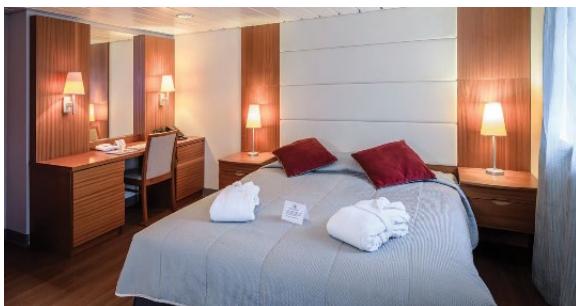


Figure 7: Cabin Category 9 Junior Suite.

Cabin Category 8 Superior Twin

Deck five: two picture windows, unobstructed view, two lower berths, sitting area. Approximately 64 square metres (210 square feet).

Deck seven forward: forward-facing picture windows, unobstructed view, matrimonial bed, private bath with full tub. Approximately 55 square metres (180 square feet).

Deck seven midship: picture windows, partial obstruction, matrimonial bed, private bath, refrigerator. Approximately 60 square metres (190 square feet).



Figure 8: Cabin Category 8 Superior Twin.

Cabin Category 7 Select Twin

Deck five: picture windows, unobstructed view, two lower berths. Approximately 60 square metres (190 square feet).

Deck eight: oversize windows, partial obstruction, matrimonial bed, private bath, refrigerator. Approximately 44 square metres (145 square feet).

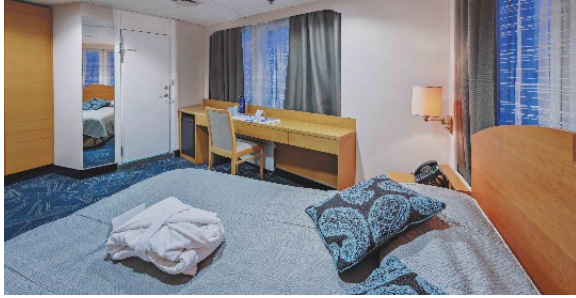


Figure 9: Cabin Category 7 Select Twin.

Cabin Category 6 Comfort Twin

Deck four: two porthole windows, unobstructed view, two lower berths. Approximately 53 square metres (175 square feet).

Deck seven: picture window, partial obstruction, two lower berths. Approximately 41 square metres (135 square feet).

Deck eight: picture windows, obstructed view, matrimonial bed, private bath, refrigerator. Approximately 49 square metres (160 square feet).



Figure 10: Cabin Category 6 Comfort Twin.

Cabin Category 5 Main Twin

Deck five: picture window, unobstructed view, two lower berths, private bath. Approximately 35 square metres (115 square feet).



Figure 11: Cabin Category 5 Main Twin.

Cabin Category 4 Exterior Twin

Deck four: porthole window, unobstructed view, two lower berths, private bath. Approximately 30 square metres (100 square feet) for twin beds or 27 square metres (90 square feet) for a single bed.



Figure 12: Cabin Category 4 Exterior Twin.

Cabin Category 3 Interior Twin

Deck five: interior cabin, two lower berths, private bath. Approximately 38 square metres (125 square feet) for twin beds or 34 square metres (110 square feet) for a single bed.



Figure 13: Cabin Category 3 Interior Twin.

Cabin Category 2 Triple

Deck four: interior cabin, three lower berths, two private baths. Approximately 61 square metres (200 square feet).



Figure 14: Cabin Category 2 Triple.

Cabin Category 1 Quad

Deck four: interior cabin, four lower berths, private bath. Approximately 73 square metres (240 square feet).



Figure 15: Cabin Category 1 Quad.

Contact Information

Jeannie Baldwin, ROMTravel Coordinator

Email travel@rom.on.ca

Phone 416.586.8034

Adventure Canada

Lauren Clewes

Email groups@adventurecanada.com

Phone 289.326.4781 or 1.800.363.7566 extension 225

ROMTravel

100 Queen's Park

Toronto, ON M5S 2C6

Phone 416.586.8034

Email travel@rom.on.ca

Website www.rom.on.ca

ROMTravel is organized by ROM's Department of Museum Volunteers to provide support for the Museum. ROM is an agency of the Government of Ontario.

ROM