



Newfoundland Circumnavigation

September 11 to 22, 2026

A ROMTravel Art, Culture and Nature Trip
The “Ocean Nova”

Your Adventure Canada Experience

Immerse yourself in the wonders of nature and culture. Travel alongside scientists, historians, naturalists, cultural ambassadors, and artists, who share their passion and experience with you.



Figure 1: Conversation with expedition host and photographer Danny Catt. © Adventure Canada, 2007.

Adventure Canada’s expeditions are more than phenomenal expeditions of a lifetime. They are lifelong learning journeys for the heart and mind. Your expedition is an immersive cultural experience both on and off the ship.

Our shipboard program is educational and fun. You can join daily presentations, debates, and workshops that provide perspective and understanding. Our expedition staff, experts in their fields, are approachable, available on deck and at meals, and always on shore during excursions. Our unique mix of entertainment and camaraderie is integral to our evening concerts, daily gatherings, and learning opportunities.

Each day, your onboard and onshore programming is thoughtfully planned to make the most of the local environment. Hiking, wildlife viewing, historic sites, community visits, and Zodiac cruising are regular activities. You can spot wildlife from the deck, take care of yourself in the ocean-facing gym, or unwind with a great book from our onboard library. You choose the activities that are best suited to your abilities and interests.

Learn from the Locals

Adventure Canada has a myriad of connections in the regions we visit. Nothing beats being welcomed as an honoured guest. Esteemed local guides connect you to our destinations, their people, and culture. Personally!

Safety First, Experience Foremost

You are in good hands. Our expedition staff are experienced, attentive and knowledgeable. They will ensure your comfort and safety, then enlighten, inspire, and entertain you!

Our expedition team is at the heart of our programming, and there is something for everyone! Join our staff in presentations, workshops, discussion panels, Question and Answer sessions, and more.

Enriching Expeditions in Spectacular Locations

Your Personal Voyage of Discovery

Explore and learn about new lands and people as you experience the rich culture and fascinating landscapes to which we sail. Take the road less travelled and enrich your perspective during visits to communities, natural habitats, and historic sites that can be otherwise difficult to reach.

Our expeditions are designed to be flexible and allow us to make the best of Mother Nature's conditions. We often make landfall at new places and are able to share new discoveries and local

knowledge with you. Your voyage will be marked with thoughtful discussions, expert interpretation, and the spirit of discovery.

Get off the ship, get into a Zodiac!

Cruise among icebergs. Search for marine mammals. Visit an outpost community. Wander remote coastlines. Simply enjoy the freedom of being out on the water daily! Our goal is to get you off the ship, as often as possible.



Figure 2: A Zodiac expedition. © Daniel J. Catt, 2007.

Zodiacs free us from the dependency on ports, piers, and other man-made infrastructure. These safe, stable, versatile boats take you where the action is.

Learn from Passionate Experts

Why would an esteemed Canada Research Chair, for example, travel with us on a working vacation? It's simple. They can't resist the opportunity to engage, excite, educate, and enlighten you! Make the most of every learning opportunity, aboard and ashore, in geology, botany, marine biology,

archeology, photography, cultural history, and more!

Our handpicked experts are as excited as you are to be on board. Join them on deck searching for wildlife, share daily meals for personal in-depth conversations, participate in workshops, attend presentations, and learn on the land. The Adventure Canada team has a deep love for discovery, learning, exploration, and growth, and is at your service.

Experience Local Culture and Traditions

From Arctic communities to the fishing villages of old New France, to the outports of Newfoundland and Labrador,

we embrace local music, dance, food, language, and traditions, everywhere we go!

Expedition travel is not just about what you see, or where you go. It's who you meet and get to know.

Wildlife Encounters

Daily excursions with expert guides put you where you are most likely to see wildlife. Whether viewing on deck, in the Zodiac, or learning during our presentation series, you will come away with an appreciation for the fine creatures that inhabit our world. Our best practices ensure the safety and integrity of the wildlife we have the privilege to view.



Figure 3: Forward observation-lounge, “Ocean-Nova”. © Adventure Canada.

Ship Overview



Figure 4: “Ocean-Nova”. © Dennis Minty, 2010.

Capacity 78 passengers

Length 73 metres (240 feet)

Ice Class 1B

Registry Bahamas

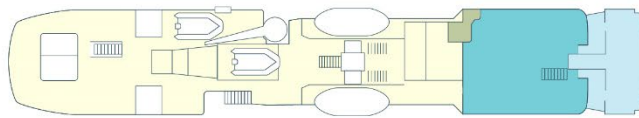
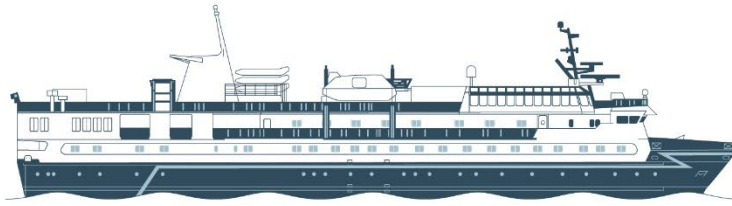
Imagine waking up to breathtaking sea views through your cabin windows, each one whispering promises of adventure. Built in Denmark in 1992 for Greenland’s icy waters, this ship sails with a lighter carbon footprint than most expedition vessels.

Its crown jewel? A glass-enclosed lounge with sweeping 200-degree views, perfect for whale watching and seabird spotting. Prefer the outdoors? The open decks are a dream for photographers and scenery lovers.

With a shallow draft and easy access to eight Zodiacs, you’ll spend more time exploring and less time ferrying. Need to head back to the ship mid-excursion? No problem. Simply return to the landing site, and we’ll whisk you back in no time. More adventure, less waiting—that’s the Ocean Nova way!

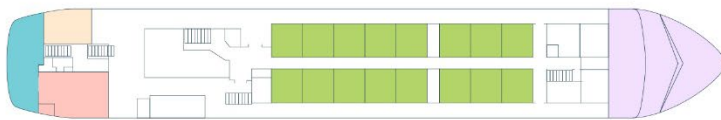
Meals feature open seating and ocean views, with globally inspired options to suit all tastes, including vegetarian and fish dishes. Desserts, made fresh daily, are a highlight. Special diets? We’ve got you covered! On the Ocean Nova, every moment connects you to nature, each other, and discovery.

Deck Plan



TOP DECK

- ZODIAC DECK ● OBSERVATION LOUNGE
- OBSERVATION DECK ● BAR



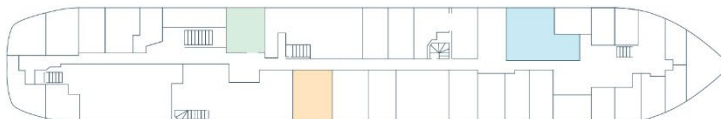
BRIDGE DECK

- LOUNGE ● GYM ● BRIDGE
- LIBRARY ● CATEGORY 4



UPPER DECK

- DINING ROOM ● CATEGORY 1 ● CATEGORY 2
- CATEGORY 3 ● CATEGORY 5 ● CATEGORY 6



MAIN DECK

- SOUVENIR SHOP ● ZODIAC ACCESS
- CLINIC

Figure 5: Deck Plan. © Adventure Canada.

Onboard Facilities

- Two lounges, forward and aft.
- Observation deck.
- Bar (charges apply).
- Dining room.
- Library.
- 24-hour beverage station.
- Ocean-facing gym.
- Medical clinic.
- Open bridge policy.
- WiFi access.
- Souvenir shop.
- Laundry.



Figure 6: Aft lounge. © Adventure Canada.



Figure 7: Observation deck. © Adventure Canada.



Figure 8: Dining room. © Adventure Canada.

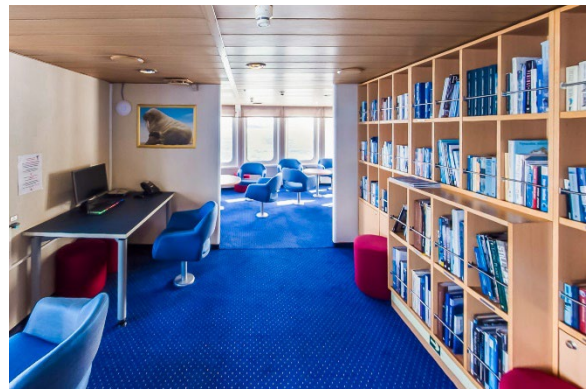


Figure 9: Library. © Adventure Canada.

Cabins

All cabins have:

- A window.
- Bathroom with a shower.
- Hair dryer, bathrobe, towels, body wash and hair care products.
- Desk with a chair.
- Wardrobe.
- Cupboard.
- Air ventilation.
- Electrical outlets are European 220 V/50 Hz.

Cabin Category 6 Single

Upper Deck: window, one lower berth; private bath. Approximately 8 to 11 square metres (86 to 114 square feet).



Figure 10: Cabin Category 6 Single.

Cabin Category 5 Superior Twin

Upper Deck: window, two lower berths, private bath. Approximately 14 square metres (145 to 156 square feet).



Figure 11: Cabin Category 5 Superior Twin.

Cabin Category 4 Bridge Deck Twin

Upper Deck: window, two lower berths, private bath. Approximately 10 square metres (104 to 112 square feet).



Figure 12: Cabin Category 4 Bridge Deck Twin.

Cabin Category 3 Upper Deck Twin

Upper Deck: window, two lower berths or one matrimonial bed, private bath. Approximately 10 to 13 square metres (106 to 140 square feet).

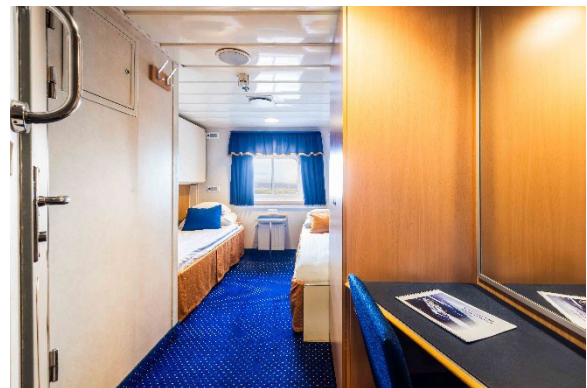


Figure 13: Cabin Category 3 Upper Deck Twin.

Cabin Category 2 Bunk Bed Twin

Upper Deck: window, two bunk bed berths, private bath. Approximately 8 to 11 square metres (86 to 122 square feet).



Figure 14: Cabin Category 2 Bunk Bed Twin.

Cabin Category 1 Triple

Upper Deck: window; two lower berths and one upper berth, private bath. Approximately 15 square metres (159 square feet).



Figure 15: Cabin Category 1 Triple.

Contact Information

Steven Latanville, ROMTravel Coordinator

Email travel@rom.on.ca

Phone 416.586.8034

Adventure Canada

Lauren Clewes

Email groups@adventurecanada.com

Phone 289.326.4781 or 1.800.363.7566 extension 225

ROMTravel

100 Queen's Park

Toronto, ON M5S 2C6

Phone 416.586.8034

Email travel@rom.on.ca

Website www.rom.on.ca

ROMTravel is organized by ROM's Department of Museum Volunteers to provide support for the Museum. ROM is an agency of the Government of Ontario.

Alternate versions available upon request.

ROM