

ROM

Namibia Explorer

March 15 to 28, 2026

Wild Botswana Optional Post-Trip Extension

March 28 to 31, 2026

A ROMTravel Culture and Nature Trip



Figure 1: Burchell's Zebra, Namibia. © Penelope Hughes, 2025.

Nestled along Africa's Atlantic coastline, just north of South Africa, sits Namibia. A culturally diverse country with a stunning and unique geography, Namibia is home to deserts, savannas, mountains, and more. With some of the finest wilderness safari opportunities, and desert sand dunes that stretch right to the ocean's shores, this beautiful country offers one of the most extraordinary travel experiences in the Southern African region.

Accompanied by National Guide and Local Expert, Tinashe Ncube, our journey begins in Namibia's capital city of Windhoek. We then explore the southern part of the Namib Desert and its massive Sossusvlei dunes and coastal towns. We drive through the rugged and breathtaking mountainous region of Damaraland to see the astonishing ancient rock art at the UNESCO World Heritage site of Twyfelfontein, before heading towards the silvery white sands of the Etosha Pan.

Take in the wide variety of flora and fauna as we traverse these diverse geographic areas. In addition to the possibility of seeing four of the "Big Five", lions, leopards, elephants and rhinoceros (both Black and White), we will see a variety of wildlife including giraffes, oryxes, and springboks, along with marine life and seabirds along the Atlantic Ocean.

Consider an optional trip extension into the wilds of Botswana's lush waterways in the world's largest river delta. This added journey will take us into the lagoons, forests and savannahs of the Okavango Delta, another UNESCO World Heritage site, that offers some of the very best wildlife viewing in the world and is not to be missed.

Namibia Explorer Trip Itinerary and Highlights



Figure 2: Map of Namibia. © Worldwide Quest International, 2025.

Day 1 Arrivals in Windhoek, Namibia

Individual arrivals at Windhoek's Hosea Kutako International Airport (WDH). Transfer to lodge. Enjoy leisure time before our welcome dinner and stargazing.

Day 2 Windhoek's German and African Confluence

Get acquainted with the eclectic city of Windhoek on a morning guided tour to see the old German architecture and vibrant township of Katutura. Enjoy a game drive on the lodge grounds, a taste

of things to come in the exciting days ahead!

Day 3 Drive to Sossusvlei for a Sunset Game Drive

Head south to the epic landscapes of Sossusvlei. The sand dunes here are among the highest in the world and part of one of the oldest and driest ecosystems. A sundowner drive takes us to see a variety of wildlife and sunset.

Day 4 Spectacular Sand Dunes

We set off early to watch the sun rise over the dunes of Sossusvlei. We have a chance to walk up a giant dune, photograph the millennial dead trees at Deadvlei, and explore the Sesriem Canyon. A relaxing afternoon at the lodge awaits before dinner.



Figure 3: Deadvlei, Namibia. © Daniel Kraft, Wikimedia Commons, Creative Commons Attribution-Share Alike 3.0, 2019.

Day 5 Drive to Coastal Swakopmund

After breakfast, we travel via the desolate, rolling hills of the Kuiseb Moon Valley towards Swakopmund. Enjoy some time at leisure to explore the town's turn-of-the-century buildings, palm-lined streets, and well-kept gardens.

Day 6 Walvis Bay and Sandwich Harbour

Today we travel to the nearby deep-water harbour at Walvis Bay for a wildlife and sightseeing cruise, keeping an eye out for seals, whales, dolphins, and Leatherback Turtles. We also explore Sandwich Harbour and the Kuiseb Delta. This evening is at leisure; in the spirit of local culture, you may decide to visit a German pub!



Figure 4: Cape Fur Seals, Namibia. © Penelope Hughes, 2025.

Day 7 Drive into Damaraland

Celebrate Namibia's Independence Day with a drive along the Skeleton Coast. Head eastward into an untamed, ruggedly beautiful region with ancient water courses, open plains and grassland, massive koppies, and deep gorges.

Day 8 Twyfelfontein

We visit the slopes of Twyfelfontein, a UNESCO World Heritage site, that conceals one of the continent's greatest concentrations of ancient rock art, both engravings and paintings.



Figure 5: Lion Plate, near Twyfelfontein, Namibia. Olga Ernst, Wikimedia Commons, Creative Commons Attribution-Share Alike 4.0 International, 2014.

Day 9 Drive to Etosha National Park

The day begins with a private guided visit to a Himba village. We then carry on to Etosha, one of southern Africa's finest and most important nature reserves, with its vast, mirage-inducing Etosha Pan.

Day 10 Across Wildlife-Rich Etosha

This is a full day of game viewing in Etosha as we move eastward and deeper into the park. Herds of giraffes, elephants, zebras and springboks are common, as well as more than 300 species of birds.

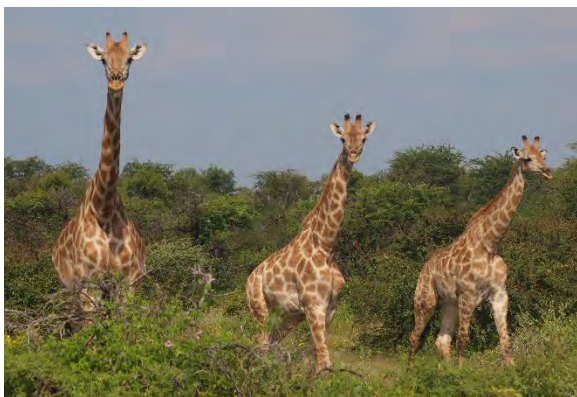


Figure 6: Namibian Giraffes, Namibia. © Penelope Hughes, 2025.

Day 11 Etosha National Park

Today is another full day with many opportunities for wonderful wildlife viewing and taking exceptional photos during a morning and an afternoon drive.

Day 12 Okonjima Nature Reserve

We continue to Okonjima, home of the AfriCat Foundation, a 55,000-acre nature reserve featuring opportunities to see cheetahs and leopards. En route we stop at Lake Otjikoto, one of only two permanent natural lakes in Namibia. In the afternoon, we enjoy a game drive with a focus on leopards.

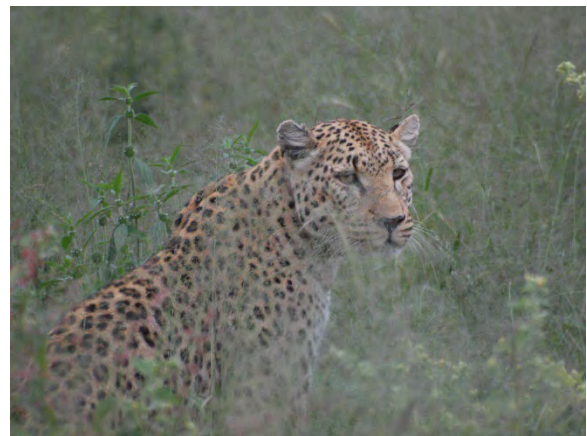


Figure 7: African Leopard, Namibia. © Penelope Hughes, 2025.

Day 13 Game Drive and Return to Windhoek

This morning, we take a game drive to learn more about AfriCat's research and conservation, and to search for wildlife. After brunch, we continue to Windhoek. This evening, we enjoy a cocktail and farewell dinner as we celebrate our amazing journey!

Day 14 Departures from Windhoek, Homebound or to Botswana

This morning, we transfer to Hosea Kutako International Airport (WDH) for

our flights home or onwards to the Okavango Delta in Botswana for a three-night extension to discover that unique ecosystem.

Wild Botswana Optional Post-Trip Extension Trip Itinerary and Highlights

Day 1 Fly to Okavango Delta via Maun

This takes place on Day 14 of the Namibia Explorer trip, for those who chose the optional extension.

After our flight from Windhoek, Namibia to Maun, Botswana, we take a light aircraft flight into the northern Okavango Delta. Chances are good for spotting wildlife while we travel in an open safari vehicle to our camp!



Figure 8: African Wild Dog, Namibia. © Penelope Hughes, 2025.

Day 2 to 3 Okavango Delta

The abundant animal and birdlife make for spectacular photographic and viewing opportunities by motorized vessel, bush walks, and in 4 by 4 safari vehicles during morning and afternoon drives. At the end of the day relax around the campfire and enjoy the stillness of a starlit night.

Day 4 Departures from Botswana

Today after breakfast, we bid adieu to the Okavango Delta as we head to the airstrip for our return flight to Maun, and our journey home.

Namibia Explorer Hotels

Windhoek

GocheGanas Lodge for 2 nights

Sossusvlei

The Desert Grace for 2 nights

Swakopmund

Strand Hotel for 2 nights

Twyfelfontein

Twyfelfontein Country Lodge for 2 nights

Etosha

Etosha Safari Lodge for 1 night

Mokuti Etosha Lodge for 2 nights

Okonjima

Okonjima Plains Camp for 1 night

Windhoek

The Weinberg for 1 night

Wild Botswana Hotel

Okavango Delta

Moremi Camp for 3 nights

National Guide and Local Expert



Figure 9: National Guide and Local Expert
Tinashe Ncube. © Penelope Hughes, 2025.

Tinashe Ncube is a National Guide for Southern Africa with a focus on Namibia. After growing up near Etosha National Park, he achieved the highest level of certification (Level 4) from the Namibia Academy of Tourism and Hospitality.

Tinashe will help us experience the country's many layers, sharing his wealth of specialized knowledge, including history, geology, flora and fauna.

ROMTravel Coordinator

Penelope Hughes is Co-Chair of ROMTravel and recently led ROMTravel trips to Haida Gwaii and Morocco. She has explored more than 50 countries and enjoyed a range of experiences from a polar dip in Antarctica to gorilla trekking

in Uganda. She is a sailor and Rear Commodore at a Toronto sailing club.

Trip Cost Per Person

All quoted costs are in Canadian dollars.

International flight costs to and from your home are not included.

Namibia Explorer

Double Occupancy: \$ 13,825

Single Supplement: \$ 1,595

Tour begins and ends at Hosea Kutako International Airport (WDH).

Wild Botswana

Double Occupancy: \$ 5,685

Single Supplement: \$ 1,195

Tour begins at Hosea Kutako International Airport (WDH), Namibia and ends at Maun International Airport (MUB), Botswana.

Contact Information

Penelope Hughes
ROMTravel Coordinator
Phone 416.586.8034
Email travel@rom.on.ca

Worldwide Quest International
Justin Peter
Phone 416.633.5666 or 1.800.387.1483
Email justin@worldwidequest.com
TICO 2667946 and 16679

Terms and Conditions

Namibia Explorer with Wild Botswana Optional Post-Trip Extension

Namibia Explorer from March 15 to 28, 2026

Wild Botswana from March 28 to 31, 2026

Please note that the living standards and practices at the destination and the standards and conditions there with respect to the provision of utilities, services and accommodation may differ from those found in Canada.

Trip Cost Per Person

All costs are quoted in Canadian dollars.

Trip cost does not include international flight costs to and from your home. Worldwide Quest International can assist with booking flights if you wish.

Namibia Explorer

Double Occupancy: \$ 13,825

Single Supplement: \$ 1,595

Tour begins and ends at Hosea Kutako International Airport (WDH).

Wild Botswana Optional Post-Trip Extension

Double Occupancy: \$ 5,685

Single Supplement: \$ 1,195

Tour begins at Hosea Kutako International Airport (WDH), Namibia and ends at Maun International Airport (MUB), Botswana.

Trip Cost Includes

Ground transport in private air-conditioned coach or 4 by 4 vehicle for transfers and excursions as per itinerary.

Group airport transfers:

Namibia Explorer: Arrival transfer from Hosea Kutako International Airport (WDH) to hotel on Day 1. One group departure transfer from hotel to Hosea Kutako International Airport (WDH) on Day 14.

Wild Botswana Optional Post-Trip Extension: Flights on Day 1 from Hosea Kutako International Airport (WDH) to Okavango Delta via Maun International Airport (MUB). Flights on Day 4 from Okavango Delta to Maun International Airport (MUB).

Porterage of one standard sized suitcase per person at the hotels, where available.

Shared accommodation in double occupancy room with private facilities in hotels listed or similar.

Free internet access inside the hotels.

Meals:

Namibia Explorer: Buffet breakfast daily, 11 lunches and 11 dinners, including welcome and farewell dinners. All included meals include water, and coffee or tea. Welcome and farewell dinners with wine or beer.

Wild Botswana Optional Post-Trip Extension: Buffet breakfast daily, 2

lunches and 3 dinners. All included meals include water, coffee or tea, and wine or local beer.

Bottled water daily in rooms and in vehicles during excursions.

All visits, entrance fees, speakers' fees and events as per itinerary.

All taxes and tips for all goods and services, drivers, hotel, restaurant and guiding staff related to the basic trip.

All hotel and local taxes.

Services of a ROMTravel Coordinator, and an English-speaking National Guide and Local Expert.

Pre-trip orientations; post-trip reunion.

A trip handbook.

Not Included

International flight costs to and from your home are not included.

Fuel surcharges if applicable.

Airport transfers, if not arriving and/or departing with the group.

Single supplement and room upgrades.

Internet access outside the hotels.

Items of a personal nature such as laundry or phone calls for example.

Airline baggage or video camera fees, if any. Excess baggage charges.

Visa fees if any.

Meals, snacks, beverages, and other services unless specified.

Additional meals and accommodations due to delays for any reason.

Emergency evacuation costs.

Trip cancellation, interruption, baggage and out of province health insurance.

Any item not mentioned in "Trip Cost Includes".

Costs

All costs quoted herein are based on rates, fees and taxes as of April 8, 2025.

Costs are subject to change without notice. Should trip costs increase, Worldwide Quest International (as per TICO regulations) reserves the right to increase the cost accordingly up to a maximum of 7%. Worldwide Quest reserves the right to substitute itineraries, hotels, airlines, vehicles, or vessels due to conditions beyond their control. Any change to itinerary will not result in eligibility for a refund.

ROM Membership Requirement

Participants must be members of The Royal Ontario Museum. For a full list of membership levels and benefits, visit the [ROM website](#). Only one person per room must be a member.

Deposits and Final Payment

Namibia Explorer: An initial non-refundable deposit of \$ 2,175.00 per person is required at the time of booking. A second non-refundable deposit of \$ 2,000.00 per person is due on September 15, 2025. The balance of payment of \$ 9,650.00 per person, and if applicable, single

supplement of \$ 1,595.00 are due on December 15, 2025.

Wild Botswana Optional Post-Trip

Extension: An initial non-refundable deposit of \$ 1,075.00 per person is required at the time of booking. A second non-refundable deposit of \$ 2,000.00 per person is due on September 15, 2025. The balance of payment of \$ 2,610.00 per person, and if applicable, single supplement of \$ 1,195.00 are due on December 15, 2025.

Reservations

As the number of participants is limited, reservations should be made as soon as possible. In the event of over subscription, a waiting list will be maintained.

Physical Limitations or Disabilities

Any physical limitation or disability requiring special attention or treatment must be reported when reservation is made or when it occurs, if later.

ROMTravel, Worldwide Quest International and/or its agents reserve the right to decline to accept or to retain anyone who may in their sole judgment require care and attention beyond that which can be provided.

Cancellations and Refunds

All cancellations must be made in writing to Worldwide Quest International. All payments are non-refundable. No refunds will be given for payments made or unused services.

For more information, read Worldwide Quest International's [Trip Cancellation and Refund Policy](#).

Travel Documentation

A passport valid for six months after the return date is required. It is the individual participant's responsibility to ensure proper visas, affidavits, and/or any other documents that may be required to enter Namibia, Botswana, any countries through which you may transit, and your home country. Neither Worldwide Quest International nor ROMTravel is responsible for missing or incorrect travel documents. Note that public health entry and quarantine requirements for any country may change with little notice. Entry to another country may be refused even if the required information and travel documents are complete.

Publication of Contact Information

Your contact information will be published in the trip handbook unless you advise ROMTravel not to do so. It is for the sole use of trip participants, ROMTravel and the travel agency. ROMTravel will not share such contact information with anyone else. For this trip, Worldwide Quest International will not publish a list of participants and will not use photographic images of you for future promotional purposes.

Travel Insurance

It is strongly recommended that each participant obtain adequate trip cancellation and interruption insurance should an unexpected event occur or

should the trip become inoperable for reasons beyond Worldwide Quest International's control. Emergency medical insurance is mandatory. Proof of insurance coverage is required. Insurance can be purchased from many different insurance providers. It is the responsibility of each participant to ensure that they have adequate out of province medical, hospital, trip cancellation and interruption insurance and baggage insurance to cover changes in health or other circumstances prior to, or during, the trip, including coverage related to COVID-19 or other transmissible diseases. All losses suffered or additional costs incurred associated with failure to have insurance, or to have sufficient insurance, are the sole responsibility of the participant. Insurance purchased through Worldwide Quest International is underwritten by Manulife Financial. Insurance may be purchased up to the time the initial deposit is processed, or at a later time but, if purchased later, would be subject to any changes to the premiums and/or to the participant's health or other circumstances at the time of purchase. Travellers may provide their own travel insurance or purchase travel insurance through another provider. For coverage options and complete coverage details, limitations and exclusions, please contact Worldwide Quest International for a quote.

A ROMTravel waiver of insurance will be required if the participant does not have

trip cancellation and/or trip interruption insurance.

Limitation of Liability

None of The Royal Ontario Museum, ROMTravel or the Department of Museum Volunteers of The Royal Ontario Museum, or any of their respective trustees, officers, employers or members (collectively "ROM") assumes any responsibility for financing, arranging, conducting or performing the trip. ROM shall not be liable for any indirect, incidental, special, punitive, incidental, consequential damages relating to, in connection with, or arising out of, the group trip, including but not limited to, loss of enjoyment, lost profits, or travel expenses, whether such damages are based on contract, tort (including negligence and gross negligence), strict liability or any other legal theory, even if such damages could have been foreseen or prevented or if ROM was advised of the possibility of same and whether or not a representative of ROM accompanies the group trip. The maximum liability of ROM to the participant for any claims relating to, in connection with, or arising from, the group trip shall not exceed \$ 50.00. This limitation applies to all claims, including those based on breach of contract, tort (including negligence and gross negligence), or any other cause of action.

Governing Law and Jurisdiction

The Terms and Conditions are governed by and construed in accordance with the laws of the Province of Ontario. Any

disputes arising from these Terms and Conditions shall be subject to the exclusive jurisdiction of the courts of the Province of Ontario.

Additional Terms and Conditions

The Terms and Conditions concerning publication of a list of participants and use of photographic images of you

supersede any such Terms and Conditions set by Worldwide Quest International.

Worldwide Quest International has specific [Terms and Conditions](#), which you must accept when completing Worldwide Quest International's online registration form.



Figure 10: Lilac-Breasted Roller, Namibia. © Penelope Hughes, 2025.

This accessible document is available in other formats by request.

ROMTravel

100 Queen's Park
Toronto, ON M5S 2C6

Phone 416.586.8034

Email travel@rom.on.ca

Website www.rom.on.ca

ROMTravel is organized by ROM's Department of Museum Volunteers to provide support for The Royal Ontario Museum. ROM is an agency of the Government of Ontario.

ROM