

History of Philanthropy at the ROM

Laying the Foundation: Opening the Museum 1905 - 1914

1905

Prominent Canadians Champion a major museum in Toronto

- Sir Edmund Walker, leading Toronto banker and key member of the Royal Commission on the University of Toronto, advocates the establishment of a first-class museum as part of a drive to establish Toronto as a major international centre.



1906

Early collecting gets underway

- Archaeologist and Egyptologist Charles T. Currelly is appointed official collector for the future museum by the University of Toronto. Through his travels, he begins to acquire artifacts that will form the basis of the ROM's first collections.

Mr. C. T. Currelly, M.A.



1907

Egyptian excavation sparks donor interest in Toronto

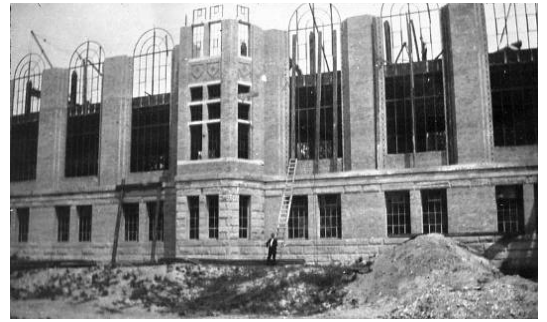
- While excavating in Egypt, Currelly is visited by prominent Torontonians, Sir Edmund Osler and Mr. and Mrs. Harry D. Warren. This visit sparks not only additional support for his work, but a lifelong interest in Currelly's mission to establish a major museum.



1910

Construction of the ROM begins

- Construction of the Museum's first wing on Philosophers' Walk begins in 1910 and is completed in 1912. Work now begins in earnest on the galleries. The Museum's cost, \$400,000, is shared by the University of Toronto and the Province of Ontario



1912

Province of Ontario officially establishes the ROM

- The Province of Ontario passes the Royal Ontario Museum Act to formally establish the Museum. Five separate museums are created, including Archaeology, Geology, Mineralogy, Paleontology and Zoology, with a total of 20 museum staff. Sir Edmund Walker is appointed first Chairman of the Board.

The Museum Grows: Ontario Builds ROM's First Expansion 1914-1933

1914

The ROM opens its doors.

- March 19: The Governor General of Canada, the Duke of Connaught, officially opens the Museum. The main entrance to the Museum is located on Bloor Street. The Museum welcomes nearly 2000 visitors a day in its first four days.



1917

The ROM's first official group of patrons is formed.

- Sir Edmund Walker, Chairman of the ROM Board of Trustees, forms "The Twenty Friends of the Arts". He invites each patron to pledge \$500 per year for 10 years to help fund new acquisitions.

1918

The ROM begins collecting its world-famous Chinese collection.

- Charles Currelly meets and befriends George Crofts, a businessman based in China with a passion for Chinese antiquities. Crofts donates and purchases an extraordinary number of artifacts for the ROM's collections, including the Ming Tomb, the Chinese Lions, and the statue of Buddha Vairocana.

1924

The ROM appoints its first official collector of Chinese art.

- The ROM appoints Bishop William White, an Anglican missionary with a keen interest in Chinese art and history, as its official collector in China. Over the next decade he acquires superb artifacts of the Bronze Age and later, including the immense Buddhist temple wall painting.



1927

Saturday Morning Club is formed.

- The Saturday Morning Club for children is launched. Hugely popular, it inspires the growth of the ROM's education program. Over 75 years later, it still attracts hundreds of children a year, making it the longest-running public program at the ROM.

1929

Province of Ontario approves expansion plans for the ROM.

- As the collections continue to grow, the ROM's need for more space becomes acute. The Province of Ontario agrees to fund the construction of an additional wing.

1931

Construction of a new wing begins during the Great Depression.

- The expansion of the ROM allows the Province to provide much needed work for the countless unemployed in the early 1930s. All labour and building materials come from Ontario. The only exception is the unique mosaic ceiling in the Rotunda, imported from Italy.

Maturity and Independence: Reaching for the Stars

1933 - 1968

1933

New Queen's Park wing officially opens.

- October 12: The new Queen's Park wing opens, more than doubling the ROM's size. The Province of Ontario has invested \$1.8 million to complete the building, designed in an Art Deco version of the Romanesque Revival style. It becomes one of Toronto's major architectural landmarks.

1937

New Chinese library opens at the ROM.

- While in China, Bishop White purchases the H.H. Mu Library with over 40,000 volumes on Chinese art, culture and history. Canada's largest Asian library at the time, this extraordinary resource is made possible through the generosity of donors.

1940

The ROM receives a transforming gift.

- Toronto businessman J.H. Fleming bequeaths his ornithological collection of over 30,000 bird specimens. This single donation transforms the ROM's zoology collection into one of international stature.

1946

Charles Currelly, a founding director of the ROM, retires.

- Currelly was the first Director of the Royal Ontario Museum of Archaeology and one of the driving forces behind the creation of the Museum. In his honour the ROM renames the Armour Court, the Currelly Gallery.

1951

Construction of new building for the ROM's Canadian collection.

- In order to house and exhibit the extensive Sigmund Samuel Canadiana collection, philanthropist Sigmund Samuel and the Province build the new Canadiana Collection building on Queen's Park Crescent. In 2000, the collection returns to the main building.

1957

First volunteers group is founded at the ROM.

- Twelve dedicated women form the Museum's first Members Volunteer Committee to assist Museum visitors and curators. By 2005, the Department of Museum Volunteers has a membership of over 550 volunteers who annually provide over **80,000** person-hours touching nearly every aspect of the ROM's activities.

1960

The ROM establishes first fundraising group for a collection.

- Louise Hawley Stone, founding member of the Museum's Volunteer Committee, establishes the Bishop White Committee to raise awareness and support for the ROM's East Asian collections and library.

1964

ROM reaches for the stars.

- Colonel R.S. McLaughlin, Canadian automobile manufacturer and philanthropist, gives the Museum \$3.25 million to build and endow the first planetarium in Canada.



ROM's Second Expansion: With Help from our Donors 1968-1982

1968

McLaughlin Planetarium opens.

- Toronto celebrates the opening of the McLaughlin Planetarium – a state-of-the-art facility for its day – and pays tribute to Col. R.S. McLaughlin who made it possible. It attracts record crowds, educating and entertaining visitors for the next three decades.

The ROM gains independence.

- The Royal Ontario Museum Act of 1968 grants the Museum independence from the University of Toronto. Now self-governed and self-managed, its buildings and collections are held in trust for the people of Ontario.

Rotunda Magazine is launched.

- A grant from the Laidlaw Foundation allows the museum to publish Rotunda Magazine, which features articles on curatorial collections and research. In 2007 Rotunda Magazine is renamed ROM Magazine and currently reaches 30,000 households.

1974

The ROM's first blockbuster exhibition opens.

- The “Archaeological Finds of the People’s Republic of China” opens and immediately draws record crowds – 435,000 people – to the Museum, making it the first of many blockbuster exhibitions.

1977

Renovation and Expansion Campaign begins.

- Outgrowing its quarters once more, the ROM launches a campaign to renovate its existing buildings and to build a new gallery wing and curatorial centre. The Board of Trustees votes to proceed with the \$42.5 million project with private and public support.

1981

The ROM closes its doors to begin renovation and construction.

New Curatorial Centre is completed.

- The new Curatorial Centre is completed—a nine-storey building housing more than five million artifacts and specimens. Superbly fitted out, it consolidates all curatorial staff, functions, facilities, labs, and libraries under one roof.

A New Era: Gallery Development 1982 - 2000



1982

Terrace Galleries building is completed. The ROM re-opens.

- The new Queen Elizabeth II Terrace Galleries building is completed. The ROM re-opens after a closure of 20 months.

1984

Edwin Goodman chairs the Gallery Development Campaign.

- The Museum re-opens but most gallery spaces lack exhibits. The Gallery Development Campaign is launched under the leadership of the Chairman of the Board of Trustees, the Hon. Edwin A. Goodman. The Campaign will raise over \$40 million to rebuild the ROM's galleries.

1984 Continued...

The Royal Terrace Circle is formed (later the Royal Patrons' Circle)

- Established by Edwin Goodman to recognize donors who made a minimum pledge of \$5,000 over five years to the Terrace Gallery Campaign
- The Royal Terrace Circle and the Royal Corporate Circle merged in 1999 and became the Royal Patrons' Circle

Her Majesty the Queen officially opens the Terrace Galleries.

1986

The Greeks and The Etruscans Gallery opens

- July 5: The ROM takes a major step toward rebuilding its galleries with the opening of The Greek World, Early Italy and the Etruscans, and Bronze and Iron Age Europe.

1987

Gardiner Museum of Ceramic Art affiliates with the ROM.

- The Gardiner Museum of Ceramic Art, located opposite the ROM on Queen's Park, affiliates with the Museum. It becomes independent again in 1996.

ROM Reproductions Shop opens.

- In 1987, the ROM Reproductions Shop opened with the mandate to develop, produce and sell unique products based on ROM artifacts and specimens. Before it closed in 2008, this volunteer-run store raised over \$1.6 million in support of ROM acquisitions and field research.

1989

The Samuel European Galleries: North Wing opens.

- October 12: Through the generosity of Ernest and Elizabeth Samuel, the first suite of galleries for European decorative arts is opened, solidifying the family's reputation for supporting public access to Canada's heritage treasures.

The ROM founds the Institute for Contemporary Culture.

- Established by volunteers Edwin Goodman and Nicole Eaton, the Institute for Contemporary Culture (ICC) is launched to explore a broad range of current cultural issues through the ideas and works of contemporary artists, photographers and architects.

1991

H.H. Levy bequeaths an extraordinary gift to the ROM.

- After donating marvelous objects of East Asian art from his private collections, Herman Herzog Levy leaves a \$15 million bequest for the acquisition of Chinese bronzes, jades, ceramics and sculptures.



Levy Gallery

1992

January 23: Ancient Egypt Gallery and Nubia Gallery open

The ROM Foundation is established.

- The ROM Foundation is created to raise funds for the ROM's highest priorities and to guide donors to critical areas of need to support the ROM's collections, research and programs.

1994

November 26: The Samuel European Galleries: South Wing opens

The ROM's First Endowed Chair.

- Long-time volunteer and friend Louise Hawley Stone donates \$2 million to endow a permanent curatorial position, the Louise Hawley Stone Chair of Far Eastern Art. Other donors will follow suit; in 2011, the ROM now has 8 endowed curatorships.

1996

First ROM Foundation fundraiser is launched

- Fact or Fiction is launched and becomes the longest running ROM signature fundraising event in the Museum's history (as of 2011 – 15 years)

1997

The Joey and Toby Tanenbaum Gallery of Byzantine Art opens.

- June 28: Thanks to a generous donation and gifts of artifacts from Joey and Toby Tanenbaum, more than 300 treasures from the Byzantine Empire go on display. The ROM now holds the largest and most significant collection of Byzantine art in Canada.

1998

The ROM receives the largest bequest ever given to a Canadian museum.

- A fervent supporter for 50 years, Louise Hawley Stone leaves a \$45 million trust fund to support the purchase of artifacts and specimens and the production of Museum publications. By 2011, the trust has generated \$ 25 million.

1999

The Dynamic Earth gallery opens.

- May 28: The Dynamic Earth: Inco Limited Gallery of Earth Sciences opens. Through the generous support of Inco Limited, the ROM develops its largest and most elaborate gallery to date, telling the story of the planet's formation and evolution.

The Gallery of Korean Art opens.

- September 11: North America's largest permanent gallery dedicated to Korean art and culture opens at the ROM. The Korea Foundation and the local Korean community play an integral role in its funding.

2000

The Christopher Ondaatje South Asian Gallery opens.

- November 29: Through the philanthropic leadership of Sir Christopher Ondaatje, the ROM establishes a South Asian Gallery, along with key endowments for a curatorship and programs funded by members of Toronto's South Asian communities. An acquisitions fund is also established to help build the collections.

Renaissance ROM: Innovation and Restoration

2000 - 2010

2000

Renaissance ROM project begins.

- Renaissance ROM, a major revitalization project, is launched to dramatically transform the Museum for the 21st century.

The ROM receives an unprecedented donation of artifacts.

- Joey and Toby Tanenbaum donate over 1800 pieces from their private collection of Chinese, Middle Eastern and Mediterranean antiquities. It is the highest-valued donation of artifacts in the Museum's history.

2001

Worldwide search for architects for Renaissance ROM.

- June 26: The ROM issues an international call for designs of the new expansion. September 7: A "long list" of 12 architects is announced. December 14: Three finalists are officially selected.

2002

Daniel Libeskind selected as architect for Renaissance ROM.

- Through a lively public process, the ROM selects Daniel Libeskind as the architect for Renaissance ROM. Inspired by the ROM's mineral collection, Libeskind proposes a crystalline structure of organically interlocking prismatic forms.

2002

Provincial and Federal Governments support Renaissance ROM.

- Prime Minister Jean Chrétien announces \$30 million for Renaissance ROM, matching a previous commitment made by the Government of Ontario.

2002

Hilary M. Weston announced as Chair of the Renaissance ROM Campaign.

- November 25: A former Lieutenant Governor of Ontario, the Hon. Hilary M. Weston is appointed Chair of Renaissance ROM, one of the largest cultural campaigns in Canadian history. It will raise funds to restore the ROM's heritage architecture and build Daniel Libeskind's landmark structure, the Michael Lee-Chin Crystal.

2003

The Crystal is named in honour of Michael Lee-Chin.

- April 2: Jamaican-born entrepreneur Michael Lee-Chin donates \$30 million to Renaissance ROM. In appreciation, the ROM names its forthcoming landmark the *Michael Lee-Chin Crystal*, and its interior atrium the *Hyacinth Gloria Chen Crystal Court* in honour of his mother.
- This remains the largest gift to a museum in Canadian history.

2003

Renaissance ROM breaks ground.

- May 28: A colourful groundbreaking ceremony marks the beginning of construction activity for the project. The demolition of the 1984 Terrace Galleries begins.

2004

The ROM receives a wonderful surprise on its 90th birthday.

- March 18: Hilary and Galen Weston, along with The W. Garfield Weston Foundation, donate \$20 million to Renaissance ROM. The gift coincides with the ROM's 90th birthday.

2005

ROM Governors Created

- The ROM Foundation Board re-constitutes itself as the ROM Governors.
- ROM Governors become the Heritage Governors.

Ten new galleries open in the heritage buildings.

- Renaissance ROM celebrates the completion of its first phase with the opening of 10 new galleries in the heritage wings, including a new suite of Asian Galleries on display together for the first time in generations.



2005 Continued...

Steel structure of the Michael Lee-Chin Crystal is complete

- On July 12, 2005, the Topping off ceremony marked the completion of the structural steel for the Michael Lee-Chin Crystal.



Young Patrons' Circle is launched November 17, 2005

- With close to 100 members, it is “the first philanthropic and social group of its kind in Canada, bringing together young professionals from diverse social and business circles who share an enthusiasm for the Royal Ontario Museum.”

2006

Cladding of the Michael Lee-Chin Crystal

- By winter 2006, the construction of the Michael Lee-Chin Crystal site was turned over to cladding installation, a dramatic process that caught the eye of every sidewalk superintendent and armchair architect in Toronto.

Young Patrons' Circle launched PROM in March 2006

- First cultural fundraising event hosted by a young patron group in Canada

2007

Michael Lee-Chin Crystal Grand Opening Celebrations

- ROM's closest supporters dazzled the red carpet at The Singular Event on June 1, 2007 – the opening gala dinner party for the Michael Lee-Chin Crystal.
- On June 2, 2007 over 40,000 flocked to see Architectural Opening and Building Dedication.



First two Lee-Chin Crystal Galleries Open

- On December 15, 2007, the ROM officially opened the James and Louise Temerty Galleries of the Age of Dinosaurs and the Reed Gallery of the Age of Mammals to the public.

2008

Final Four Galleries open in the Michael Lee-Chin Crystal

- Sir Christopher Ondaatje South Asian Gallery – February 2008
- Wirth Gallery of the Middle East – February 2008
- Shreyas and Mina Ajmera Gallery of Africa, the Americas and Asia Pacific – April 2008
- Patricia Harris Gallery of Textiles & Costume – April 2008

Renaissance ROM celebrates the opening of the Teck Suite of Galleries: Earth's Treasures

- In December 2008, the ROM officially opens the Teck Suite of Galleries: Earth's Treasures, including the Vale Inco Limited Gallery of Minerals, Gallery of Gems and Gold and the Canadian Mining Hall of Fame Gallery.
- The \$10 million gift from Teck is the largest corporate gift to the ROM.

2009

Renaissance ROM celebrates the opening of the Schad Gallery of Biodiversity and successful completion. The \$12 million gift from the Schad Foundation is the largest gift from a private foundation to the ROM.

- In February 2009, the ROM officially opens the Schad Gallery of Biodiversity and Earth Rangers Studio.
- In June 2009, the ROM officially declares Renaissance ROM one of the most successful cultural fundraising campaigns in Canadian history.

2010

ROM hosts blockbuster exhibitions *Dead Sea Scrolls* and *Terracotta Warriors*

2011

ROM celebrates opening of the Eaton Gallery of Rome, Joey and Toby Tanenbaum Gallery of Byzantium, Joey and Toby Tanenbaum Gallery of Rome and the Near East, and the Galleries of Africa: Nubia

- July 1, 2011: Thanks to the generous support of a contribution from the Government of Canada and the tremendous generosity of Thor and Nicole Eaton, Joey and Toby Tanenbaum, Rudolph P. Bratty and family, and many others, the ROM opens a suite of new permanent galleries, reintroducing its visitors to the ancient civilizations of Rome, Byzantium and Nubia.

